

Annual Report 2024

Link to Progress

LTP
link to progress



TABLE OF CONTENT

Introduction.....	3
Vision, Mission and core values.....	4
About Link to Progress.....	7
The year 2024.....	8
Financials of 2024.....	16
Management efforts.....	17
Plans for 2025.....	19
Contact.....	20

INTRODUCTION

This is Link to Progress annual report for 2024 that presents the progress of the integrated programs carried out through the year 2024. It points out the achievements towards LTP's Strategic objectives as defined in the 2024 annual work plan.



Mission, Vision and Values

Our Mission

A Uganda with improved access to basic services and free from absolute poverty, ignorance and preventable diseases.

Our Mission

To empower and transform lives of the marginalised population in Uganda by improving access to sustainable water, sanitation and hygiene, education, health and nutrition, livelihood and food security and environmental protection through an integrated approach, effective collaboration and partnerships.

Our Core Values

Transparency

We are honest and open, practices are easy to understand, verified by all key stakeholders.

Integrity

Never to compromise our reputation and always act in the best interest of our target beneficiaries

Accountability

We take personal responsibility for using our resources efficiently

Teamwork

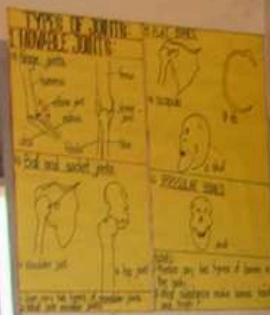
Work together cohesively, towards a common goal, and supporting each other

Efficiency and Effectiveness

High quality outputs in an optimal way with real value for money.

Equity

Practice fairness and impartiality towards achieving equality for all.



POSTER: TYPES OF MATERIALS

Material	Properties	Uses
Wood	Light, strong, easy to work with	Tables, chairs, doors
Plastic	Light, waterproof, durable	Containers, toys, pipes
Metal	Strong, heavy, conducts electricity	Wires, tools, machinery
Concrete	Strong, heavy, fireproof	Buildings, roads, bridges
Glass	Transparent, brittle, hard	Windows, mirrors, lenses
Paper	Light, flexible, easy to write on	Books, newspapers, drawings



Nyig koppogo ame
cakere kede duon
nuktae me Leblango

Aa	Bb	
Dd	Ee	Ee
ee	Ee	ee
Gg	Ll	Mm
Nn	Oo	Oo
Oo	Oo	Oo
Pp	Rr	Tt
Tt	Dd	Nn
Nn	ny	ll

abob	bul	cem
amado	bur	cawa
dako	enopi	cen
dyan	ebub	gwik
		guen
		kom



A classroom full of students in pink shirts and blue skirts sitting at wooden desks. They are looking towards the camera. The desks have books on them. The floor is dirt. There is a stack of wooden planks in the background.

About Link to Progress

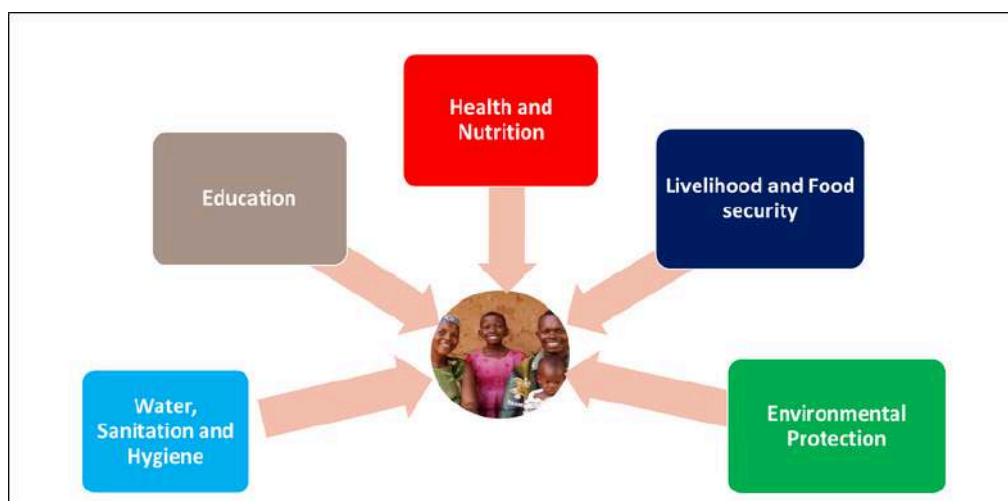
Link to Progress (LTP) is a Dutch founded development organization registered in Uganda and has been in operation since 2008 serving vulnerable communities through provision of safe water, hygiene and sanitation, and other services such as education quality improvement, health, economic empowerment.

LTP is registered with the Government of Uganda (Reg. No: S.5914/7996) as an independent non-governmental organization. The organization was founded in 2008 by The Good Shepard Foundation (TGS Netherlands) and Stitching Africa Projection (SAP Netherlands).

LTP believes in an integrated approach to development with interventions applied simultaneously and across multiple sectors. Till today over 200,000 people have benefited from LTPs interventions. LTP provides overall program management and coordination across interventions and partner organizations through the dedicated staff who are empowered to restore hope and bring about a positive change to good number of communities throughout Uganda.

Link to Progress made an entry into Northern and Eastern part of Uganda since 2009. Long term development work began with provision of clean water sources to the communities and LTP had purely implemented WASH projects in different parts of Northern Uganda from 2009 to 2012. Later it expanded the program scope from WASH programme to education, scholarship programs, infrastructure development in government primary and secondary schools, health and nutrition, livelihood, and environmental protection.

The Integrated approach



THE YEAR 2024

During the year, Link to Progress' team focused mostly on program implementation for both the new and continuing projects, donors' online and physical engagements, fundraising and networking activities, capacity enhancement of staff and partnership building with relevant key program stakeholders.

In 2024, LTP executed several projects through her integrated programming including water and sanitation, education, livelihood and food security, health and nutrition and environmental protection. Some projects were a continuation from previous years while others were new projects acquired within the year. In addition, LTP started new projects too. The details of the different programs per thematic area are found below:

Water, sanitation and hygiene

Water sanitation and hygiene were implemented in Alebtong, Otuke and Kole district with support from partners.

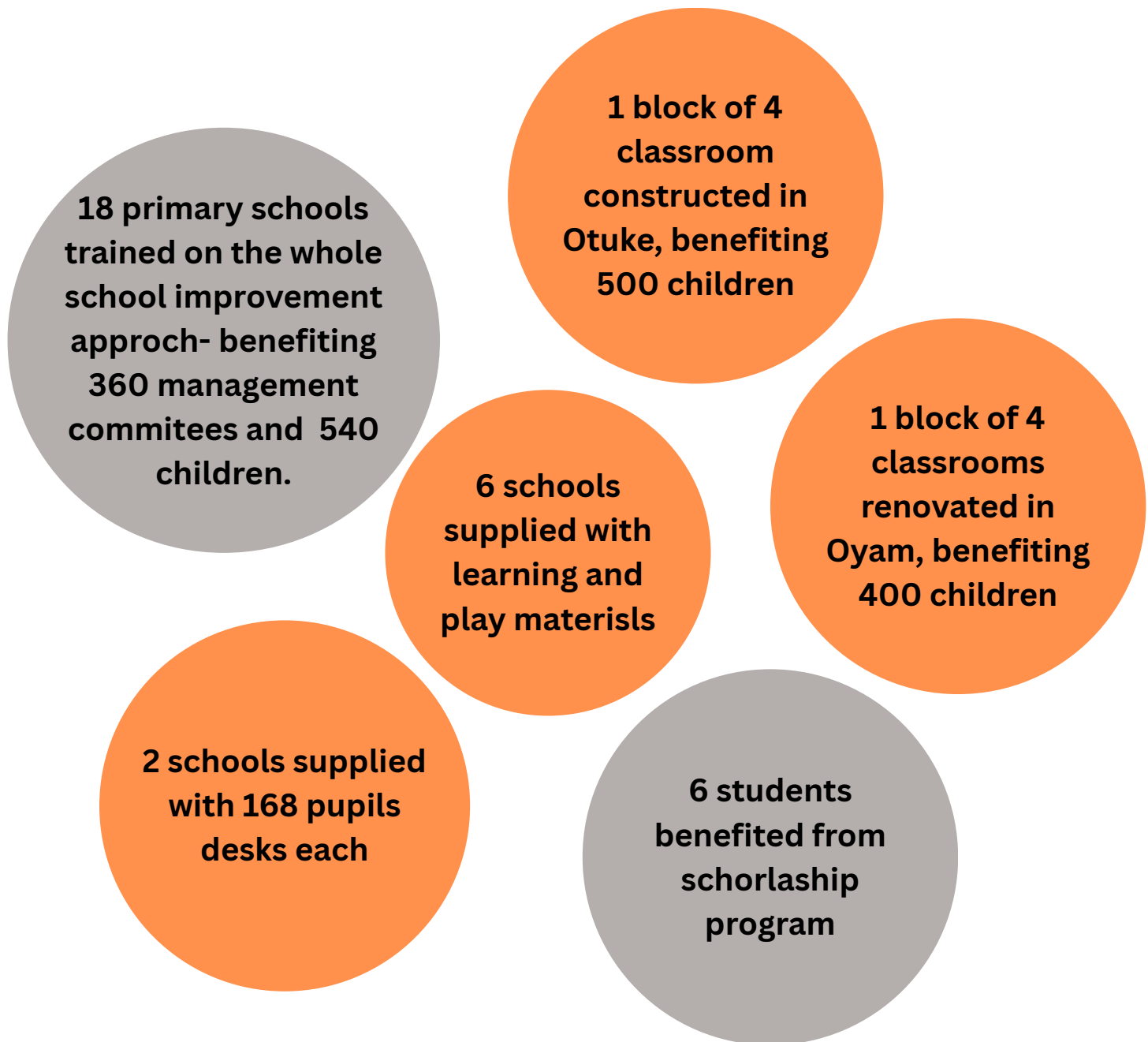
With their support, we were able to do construction of latrines, and water sources, trainings of water source committees and improvement of functionality through training of hand pump mechanics.





Education

In 2024, Link to Progress through her education quality improvement program worked with different partners to do infrastructural development in government aided primary schools, enhance the capacity of different structures like the school management committees, the parents, teachers and pupils on the whole school improvement approach, mental health, provision of learning materials like textbooks, play materials to enhance teaching and playing in schools, training of literacy boosts facilitators and sponsorship. This was possible through support from our partners and the district local governments of Alebtong, Otuke and Oyam districts.





Health and Nutrition

The health situation in Northern Uganda is still in a poor condition as it was evident in LTPs MCC of 2024, which recorded, High prevalence of anaemia at 38% for children compared to 51.7% in Uganda for children under 5 years, high prevalence of stunting at 14%, this is an indicator of chronic malnutrition, high prevalence of wasting at 4% and high prevalence of malaria at 50% of a total of 960 children who turned up for the MCC.

Such indicators pushes Link to Progress to implement health and nutrition programs, and this was one of her focus in 2024, we did this through the annual medical checks for children, the first 1000 days of a child, quarterly health outreaches in communities, formation and training of school health clubs, promotion of school lunches in schools, trainings on menstrual hygiene management, promotion of kitchen gardens in schools and care for children with disabilities that just started in 2024.

Link to Progress implemented the above activities through partnerships with MCC Netherlands for the annual medical checks for children, Katalemwa Cheshire home for rehabilitation services for assessment of children with disabilities and the regional hospitals. We also worked with the health departments of the different districts of operation to conduct health outreaches and this made it possible to reach over 2000 children. We would like to thank our partners for the support given to LTP to reach out.

In the districts of Oyam, Otuke and Alebtong districts, we managed to reach out through the following.

2 Medical checks for children conducted

5 community health outreaches conducted

16 schools with 11,500 children benefited from school lunches

12 schools trained on menstrual hygiene management with 4,200 reusable sanitary pads distributed

1 menstrual hygiene block and 1 incinerator constructed

24 Children with disabilities assessed, and 11 provided with assistive devices



Livelihood and food security

Northern Uganda has had challenges in recovery and long-term stability. It struggles with food insecurity and malnutrition, despite the massive influx of development funds, improved security and expansion of markets. In northern Uganda, the conflict continues to influence household livelihoods. Households that have a member who experienced war crimes are consistently worse off. These continuing problems with food security and nutrition call into question many assumptions about recovery and development. In particular, the idea that peace will bring a natural bounce in economic and household well-being does not appear to hold up in these cases.

Additional structural challenges to recovery in Northern Uganda include; climate change and environmental degradation, poor governance and corruption, limited opportunities for decent work, livelihood transformation and loss, and conflict over land. These factors reinforce each other and make it extremely difficult for average households to develop sustainable and secure livelihoods.

There is therefore a need to provide adequate training so that they may enhance their participation in higher income-generating activities and enhance their food security. Such capacity building and training initiatives must fit within households' existing livelihood skill levels. Important to note is that practical literacy training is, however, valuable and it builds confidence and reduces the perception among illiterate households that they are excluded from the training process

In 2024, Link to Progress has been addressing these through partnerships with 100weeks to give unconditional cash transfers to members of village savings and loans association (VSLA) groups. The 100 weeks program was implemented in Oyam and Otuke districts



10 VSLA groups in 100weeks program

210 members received unconditional cash transfers

397 members of VSLA groups have income generating activities

Environmental protection

According to the Ministry of Water and Environment from Uganda (2016), during the period 2010-2015, an estimated number of 250,000 hectares of forest were lost. In the same period, forest estate outside protected areas reduced from 61% in 2005 to 38% in 2015.

Evidence of environmental deterioration is already present ecosystem destruction, species decline and extinctions, pollution and climate change, to name a few. These losses also impact on human wellbeing. The needs of the population and the country must be met and therefore this calls for environmental managers to employ innovative management approaches to ensure that the environment continues to support human development and wellbeing into the future.

In 2024, at Link to Progress, we also joined the rest of the world to protect the environment through trainings of community members on disaster risk reduction mechanisms, trainings on the production of energy saving stoves, promotion of tree planting in schools and promotion of the use of clean energy through construction of institutional energy saving stoves to promote the school lunches.

**3
institutional
stoves
constructed**

**3 VSLA
groups
trained**

**5 schools
trained on
management
of trees**

**1 radio talk
show**



FINANCIALS OF 2024

The year 2024 has been yet another year of growth for Link to Progress with a higher budget and income made available for the program and administrative activities than in 2023. The continued efforts in training staff to take lead in fundraising are encouraging. LTPs assets and staff have also grown, signifying further growth of the organization. The 2024 financial statements are here below.

Statement of income and expenditure

		Unrestricted funds Ushs	2024 Restricted funds Ushs	Total funds Ushs
Income	Note			
Donations	3	-	5,058,124,022	5,058,124,022
Community collections	3	-	4,200,000	4,200,000
Other income	4	23,685,045	-	23,685,045
		<u>23,685,045</u>	<u>5,062,324,022</u>	<u>5,086,009,067</u>
Expenditure on:				
Project costs	5	-	4,121,364,739	4,121,364,739
Community mobilization	6	-	167,368,848	167,368,848
Administrative expenses	7	-	297,631,230	297,631,230
Finance costs	8	-	285,339,121	285,339,121
Employee benefit expenses	9	-	314,824,682	314,824,682
		<u>-</u>	<u>5,186,528,620</u>	<u>5,186,528,620</u>
(Deficit)/Surplus for the year		<u>23,685,045</u>	<u>(124,204,598)</u>	<u>(100,519,553)</u>
Net movement in funds				
Retained funds		23,685,045	(124,204,598)	(100,519,553)
Retained funds brought forward		23,114,543	933,799,803	956,914,346
Retained funds carried forward		<u>46,799,588</u>	<u>809,595,205</u>	<u>856,394,793</u>

MANAGEMENT EFFORTS

The LTP team

The management of LTPs daily activities is done by 14 staff members consisting of 3 staff in the finance department, 2 program officers, 8 project assistants, 1 program manager and 1 country manager. The management has been made possible with support from the board of directors who consist of 3 Ugandan nationals and 2 Dutch nationals.

One board member, Hilde Klok stepped down from the board in June 2024, and she was replaced by Sara Margiotta making the board membership to remain 5.

Fundraising

The year 2024 was a year of bold strides taken by LTP to boost her fundraising efforts- some of the activities that were undertaken include the following

- Continued networking, engagement and seeking partnership in country with other development partners and expertise. This was to give the team more knowledge and understanding for effective implementation, hence donor fulfilment, it also helps to supplement the works of the organization. Some of them include Katalemwa Cheshire home for the inclusion project.
- Donor management involves prompt email correspondence, making requests for funds, timely reporting, program updates among others.
- LTP visited Netherlands in a bid to boost its fundraising. In this visit, LTP not only met their current donors but also met potential donors for sustainability but also for diversification. This we believe, created confidence amongst the donors and the organization.
- After several online and physical meetings with Veronika (a consultant hired by LTP to enhance the SMT's fundraising skills), LTP board finally built confidence in the LTP SMT to take on the fundraising meetings and update the consultant on a quarterly basis and for lesser time compared to the past. This shows growth in the team but also confidence in doing what they have, for so long been trained on.
- Involvement of all staff in the fundraising processes like reporting, field documentation of success stories and areas of learning among others.

Capacity building

LTP staff have continuously received capacity enhancement on areas of the integrated project including the first 1000 days of a child, community health clubs, mental health among others. This is all aimed at improving the quality of work that is put out by LTP.

Monitoring and Evaluation

With our program portfolio growing, we are steadily strengthening a delivery modality that will focus on impact monitoring and evaluation. LTP has continued to remain active in the communities for some time even after handing over facilities to the community beneficiaries. This is done in terms of post implementation monitoring activities. Because growth comes with increasing expectations, the need to provide evidence of results (impact), quality of programs and accountability, LTP has realized the need for: staff capacity building on monitoring, evaluation and learning and an officer for M&E. The new portfolio was approved by the board of LTP in 2024 which gave LTP a go ahead to hire a monitoring and evaluation officer.

With the above, LTP will be able to put up a robust MEAL system in place.



PLANS FOR 2025

LTPs plans for 2025 will focus on the 5 main objectives of the organization, namely:

To contribute to a reduction in the prevalence of water related diseases through increased access to safe water, hygiene and sanitation facilities.

To contribute to improved health in schools and communities through menstrual hygiene management, medical camps and strengthening nutrition. To contribute towards improved quality education through infrastructural development and capacity enhancement.

To improve livelihood resilience of small holder farmers, women, youth and people with disabilities.

To contribute to improved conservation and protection of natural resources and environment in 55 communities and schools.

2025 Budget

No	REVENUE/ PROJECT NAME	Component	Total project cost- UGX	Total project cost in Euros
1	Scholarship project for primary and secondary	Education	15,000,000	3,731
2	Integrated efforts to promote quality education, general well being and sustained economic resilience in Otuke district	Integrated	137,504,546	34,205
3	Health for children with disabilities	Health	169,937,622	42,273
4	Charity Water project 2024-2025	WASH	25,716,176	6,397
5	Charity Water project 2025-2026	WASH	241,202,214	60,000
6	Integrated Oyam project	Integrated	488,690,062	121,564
7	Integrated Alebtong project 2023-2026	Integrated	456,001,854	113,432
8	Integrated Otuke- WASH+ Integrated	Integrated	502,500,000	124,999
9	Cash for Development- 100weeks in Amunga	Livelihood	200,439,040	49,860
10	Livelihood project 2024-2025	Livelihood	48,463,662	12,056
11	School projects in Otuke 2024	Education	1,453,363,100	361,530
12	WASH in schools project Alebtong	Education+ WASH	321,801,292	80,049
13	Improving sanitary conditions in Ogugu primary school, Oyam district	Education + WASH	113,025,833	28,116
14	Social inclusion program-Joint proposal with 100 weeks	Livelihood	129,266,513	32,156
15	Ultrta Sound Scan	Health	100,920,000	25,104
	TOTAL		4,403,831,915	1,095,471

CONTACT US

Link to Progress

Osman Road, Plot 12, Lira City
Lake drive, plot 57, Luzira, Kampala

P.O. Box 71881, Kampala

0772-222016

uganda@linktoprogress.org

www.linktoprogress.org

